

Hopper Barge Cheery SHB 1002

General Description

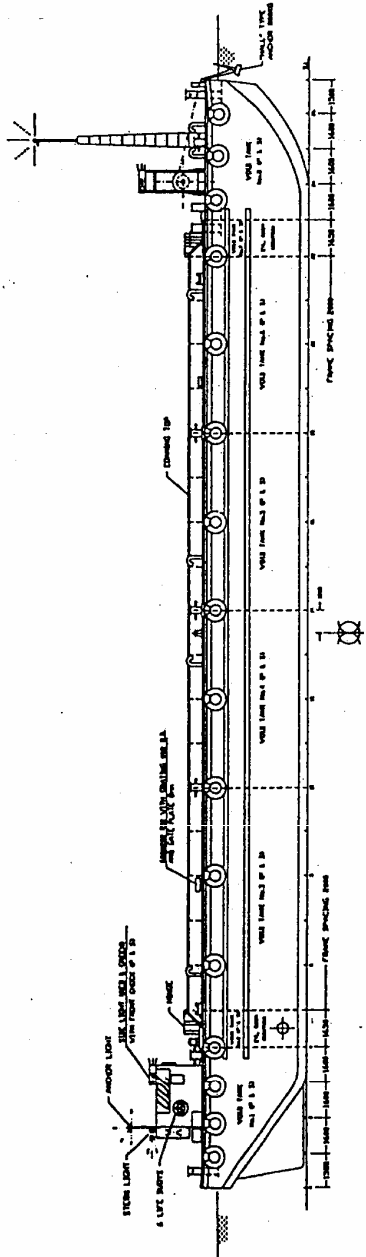
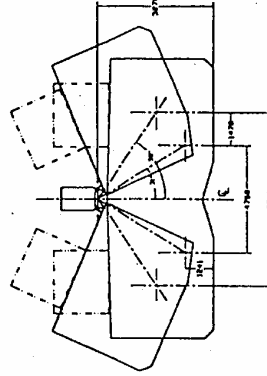
Year Built :	1 9 9 3
Dimension :	49.9 M (L) x 12.4 M (B) x 4.7 M (D)
Hopper Capacity :	1,000 cu. m.
Type :	non self-propelled
Dumping Arrangement :	self - split by hydraulic
License No. :	2 1 4 9 2 V
Class :	H. K. Marine Department
Power Source :	1 x 2135 diesel engine (40 KW)



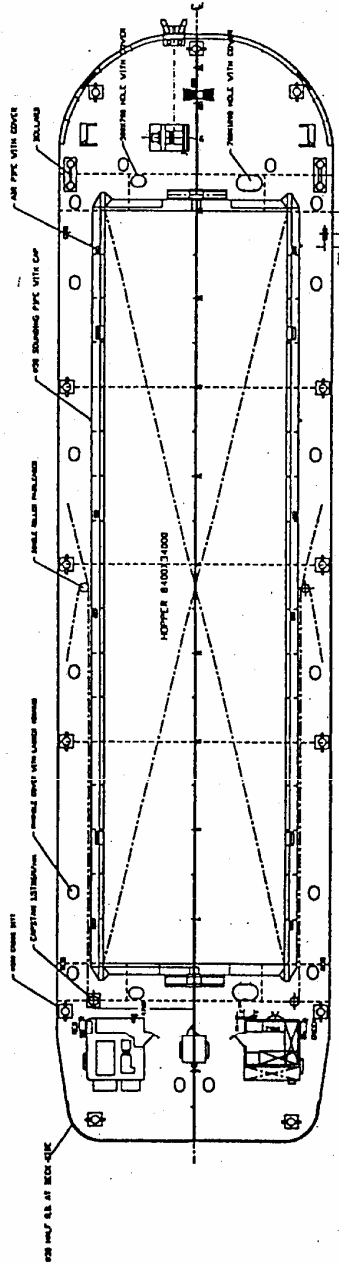
General Layout of Hopper Barge Cheery SHB 1002

PRINCIPAL DIMENSIONS

LENGTH O.A.	49.92 M
BREADTH MLD	12.40 M
DEPTH MLD	4.70 M
MAX. DRAUGHT (DESIGN)	4.04 M
CAMBER	170 mm



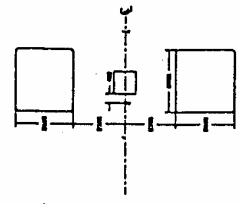
PROFILE



PLAN

- NOTES:
- (1) LIMITS SWITCH OR STOPPER TO PREVENT EXCESSIVE SPLIT OF HOPPER IS TO BE PROVIDED
 - (2) ALL AIR PIPES TO BE PROVIDED WITH EFFECTIVE OF CLOSING APPLIANCES
 - (3) THE DRAWING AND LICENSE FOR THE VESSEL ARE SUBJECT TO SATISFACTORY OF STABILITY
 - (4) THE VESSEL IS TO BE INCLINED TO 15°
 - (5) VESSEL TO BE INCLINED IN PRESENCE OF M.D. SURVEYOR/INSPECTOR

FREEBOARD WILL BE ASSIGNED BY H.K.GOVERNMENT MARINE DEPARTMENT



1000 CU.M. SPLIT HOPPER BARGE

GENERAL ARRANGEMENT

JOB NO.	SCALE AS SHOWN
DRAWN BY	DATE 06/03/91
CHECKED BY	APPROVED BY
DRAWING NO. Y58301-020-01A	

Hopper Barge Cheery SHB 1003

General Description

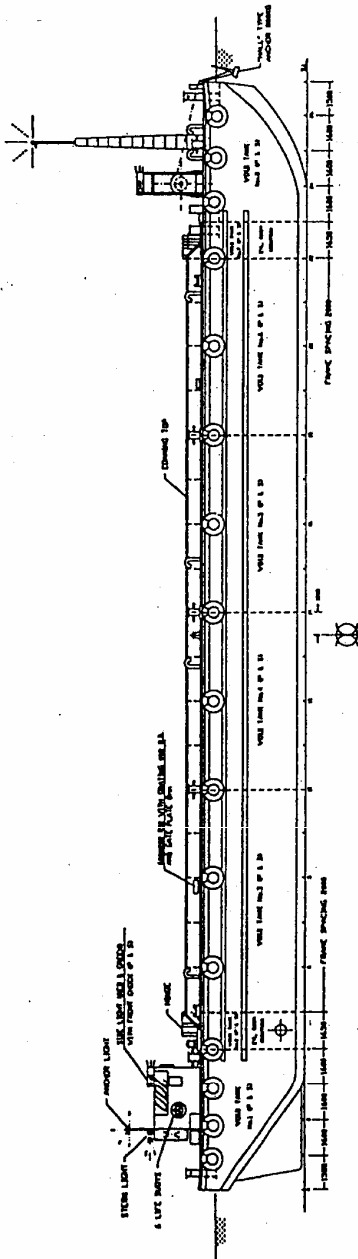
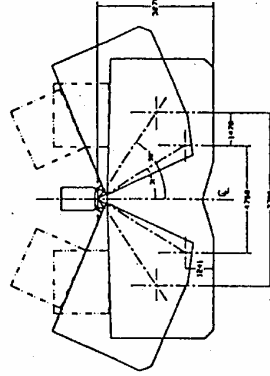
Year Built :	1 9 9 3
Dimension :	49.9 M (L) x 12.5 M (B) x 4.7 M (D)
Hopper Capacity :	1,000 cu. m.
Type :	non self-propelled
Dumping Arrangement :	self - split by hydraulic
License No. :	2 1 4 7 8 V
Class :	H. K. Marine Department
Power Source :	1 x 2135 diesel engine (40 KW)



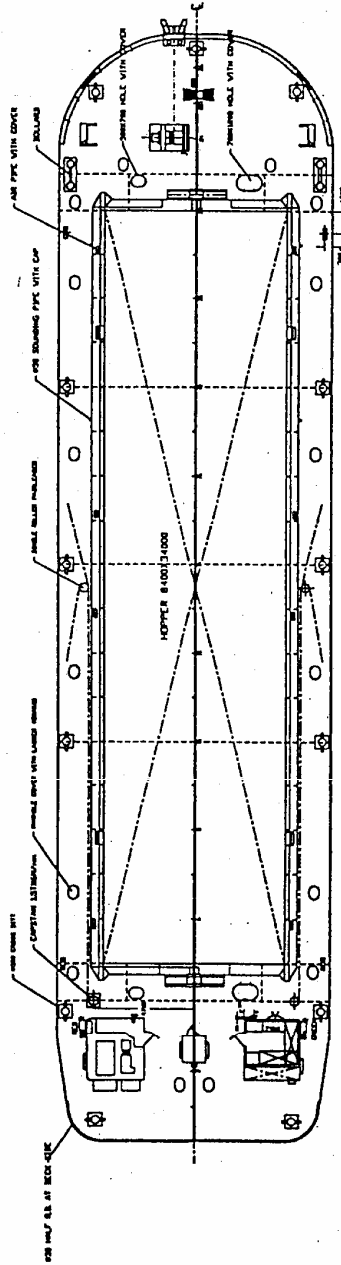
General Layout of Hopper Barge Cheery SHB 1003

PRINCIPAL DIMENSIONS

LENGTH O.A.	49.92 M
BREADTH MLD	12.40 M
DEPTH MLD	4.70 M
MAX. DRAUGHT (DESIGN)	4.04 M
CAMBER	170 mm



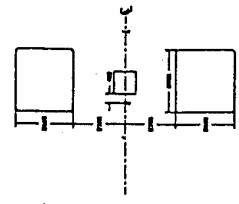
PROFILE



PLAN

- NOTES:
- (1) LIMITS SWITCH OR STOPPER TO PREVENT EXCESSIVE SPLIT OF HOPPER IS TO BE PROVIDED
 - (2) ALL AIR PIPES TO BE PROVIDED WITH EFFECTIVE OF CLOSING APPLIANCES
 - (3) THE DRAWING AND LICENCE FOR THE VESSEL ARE SUBJECT TO SATISFACTORY OF STABILITY CALCULATION AND TEST.
 - (4) VESSEL TO BE INCLINED IN PRESENCE OF M.D. SURVEYOR/INSPECTOR

FREEBOARD WILL BE ASSIGNED BY H.K.GOVERNMENT MARINE DEPARTMENT



1000 CU.M. SPLIT HOPPER BARGE

GENERAL ARRANGEMENT

JOB NO.	SCALE AS SHOWN
DRAWN BY	DATE 06/03/91
CHECKED BY	APPROVED BY
DRAWING NO. Y58301-020-01A	

Hopper Barge Cheery SHB 1005

General Description

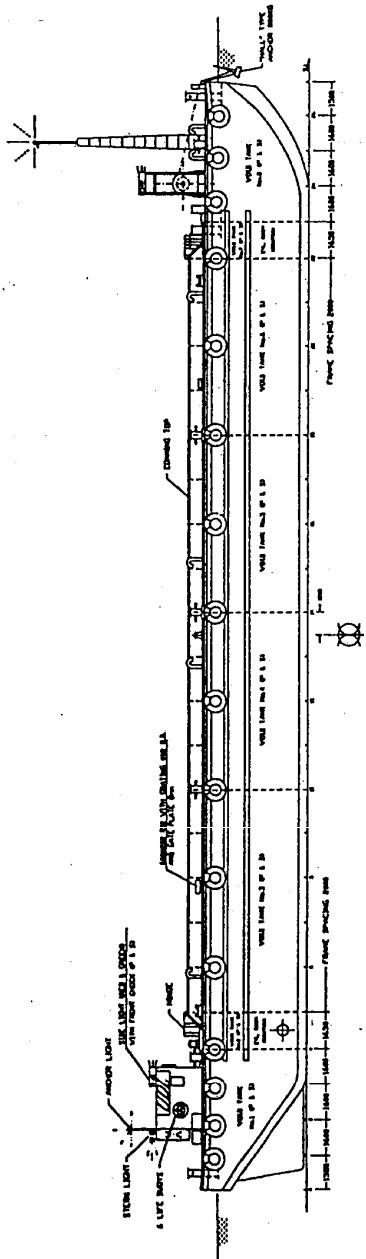
Year Built :	1 9 9 3
Dimension :	49.9 M (L) x 12.4 M (B) x 4.7 M (D)
Hopper Capacity :	1,000 cu. m.
Type :	non self-propelled
Dumping Arrangement :	self - split by hydraulic
License No. :	2 1 5 0 2 V
Class :	H. K. Marine Department
Power Source :	1 x 2135 diesel engine (40 KW)



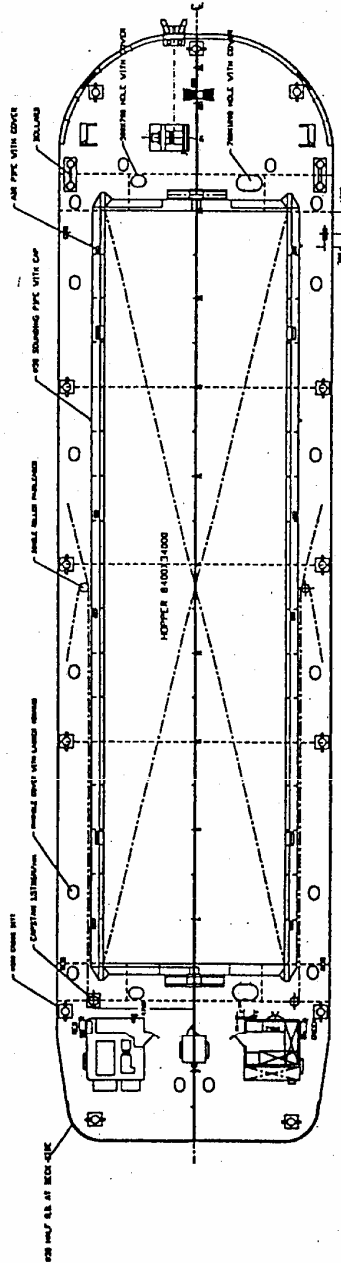
General Layout of Hopper Barge Cheery SHB 1005

PRINCIPAL DIMENSIONS

LENGTH O.A.	49.92 M
BREADTH MLD	12.40 M
DEPTH MLD	4.70 M
MAX. DRAUGHT (DESIGN)	4.04 M
CAMBER	170 mm



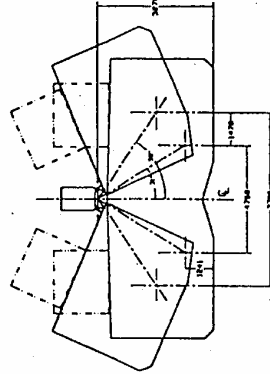
PROFILE



PLAN

- NOTES:
- (1) LIMITS SWITCH OR STOPPER TO PREVENT EXCESSIVE SPLIT OF HOPPER IS TO BE PROVIDED
 - (2) ALL AIR PIPES TO BE PROVIDED WITH EFFECTIVE OF CLOSING APPLIANCES
 - (3) THE DRAWING AND LICENCE FOR THE VESSEL ARE SUBJECT TO SATISFACTORY OF STABILITY
 - (4) THE VESSEL IS TO BE INCLINED TO THE PORT OR STARBOARD AS SHOWN
 - (5) VESSEL TO BE INCLINED IN PRESENCE OF M.D. SURVEYOR/INSPECTOR

FREEBOARD WILL BE ASSIGNED BY H.K.GOVERNMENT MARINE DEPARTMENT



1000 CU.M. SPLIT HOPPER BARGE

GENERAL ARRANGEMENT

JOB NO.	SCALE AS SHOWN
DRAWN BY	DATE 06/03/91
CHECKED BY	APPROVED BY
DRAWING NO. Y58301-020-01A	

Hopper Barge HB 1017S

General Description

Year Built :	1 9 9 3
Dimension :	49.9 M (L) x 12.4 M (B) x 4.7 M (D)
Hopper Capacity :	1,000 cu. m.
Type :	non self-propelled
Dumping Arrangement :	self - split by hydraulic
License No. :	2 1 5 2 2 V
Class :	H. K. Marine Department
Power Source :	1 x 2135 diesel engine (40 KW)



Hopper Barge SH 104

General Description

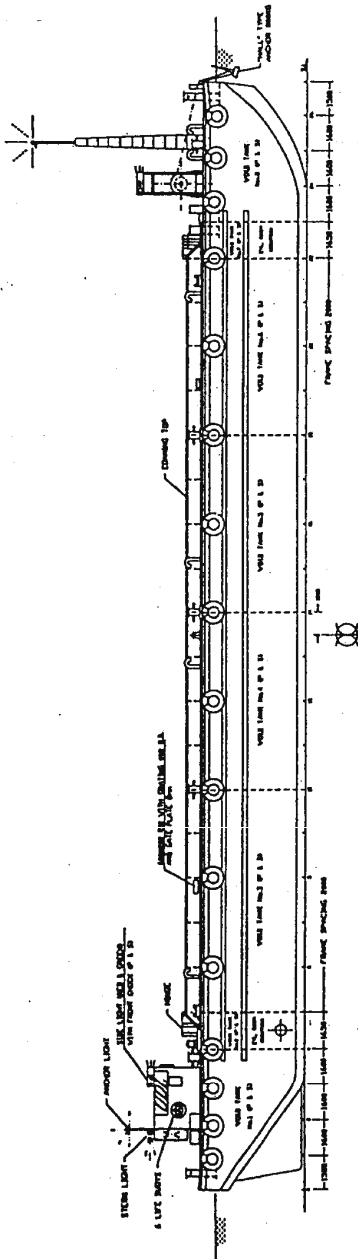
Year Built :	1 9 9 1
Dimension :	49.9 M (L) x 12.4 M (B) x 4.7 M (D)
Hopper Capacity :	1,000 cu. m.
Type :	non self-propelled
Dumping Arrangement :	self - split by hydraulic
License No. :	2 1 3 6 5 V
Class :	H. K. Marine Department
Power Source :	1 x 2135 diesel engine (40 KW)



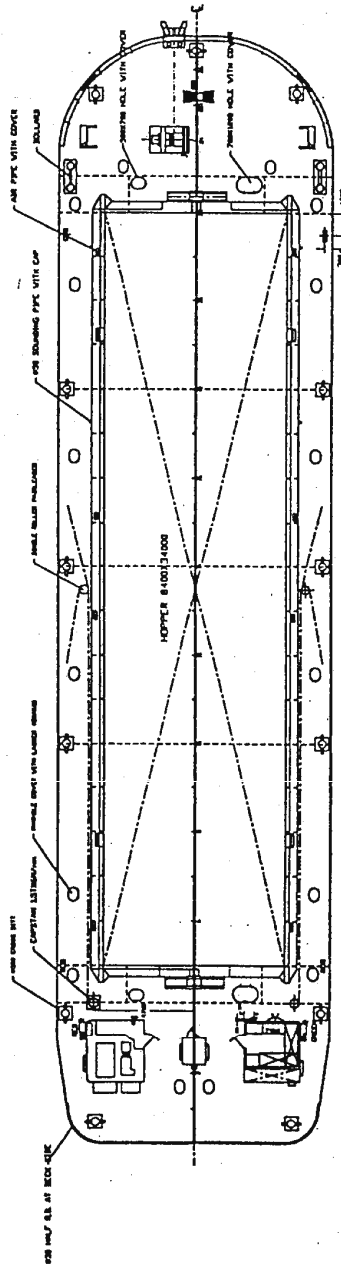
General Layout of Hopper Barge SH 104

PRINCIPAL DIMENSIONS

LENGTH O.A.	49.92 M
BREADTH MLD	12.40 M
DEPTH MLD	4.70 M
MAX. DRAUGHT (DESIGN)	4.04 M
CAMBER	170 mm



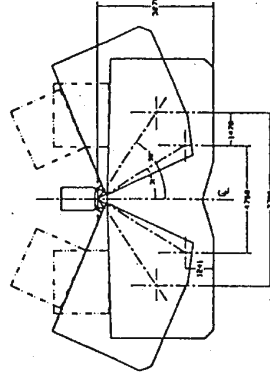
PROFILE



PLAN

- NOTES:
- (1) LIMITS SWITCH OR STOPPER TO PREVENT EXCESSIVE SPLIT OF HOPPER IS TO BE PROVIDED
 - (2) ALL AIR PIPES TO BE PROVIDED WITH EFFECTIVE CLOSING APPLIANCES
 - (3) THE DRAWING AND LICENCE ISSUED FOR THE VESSEL ARE SUBJECT TO SATISFACTORY OF STABILITY INFORMATION FROM THE DESIGNER
 - (4) VESSEL TO BE INCLINED IN PRESENCE OF M.D. SURVEYOR/INSPECTOR

FREEBOARD WILL BE ASSIGNED BY H.K. GOVERNMENT MARINE DEPARTMENT



1000 CU.M. SPLIT HOPPER BARGE

GENERAL ARRANGEMENT

JOB NO.	SCALE AS SHOWN
DRAWN BY	DATE 06/03/91
CHECKED BY	APPROVED BY
DRAWING NO. Y58301-020-01A	

Hopper Barge Sunny SB 6

General Description

Year Built :	1 9 9 3
Dimension :	49.9 M (L) x 12.4 M (B) x 4.7 M (D)
Hopper Capacity :	1,000 cu. m.
Type :	non self-propelled
Dumping Arrangement :	self - split by hydraulic
License No. :	2 1 4 8 1 V
Class :	H. K. Marine Department
Power Source :	1 x 2135 diesel engine (40 KW)



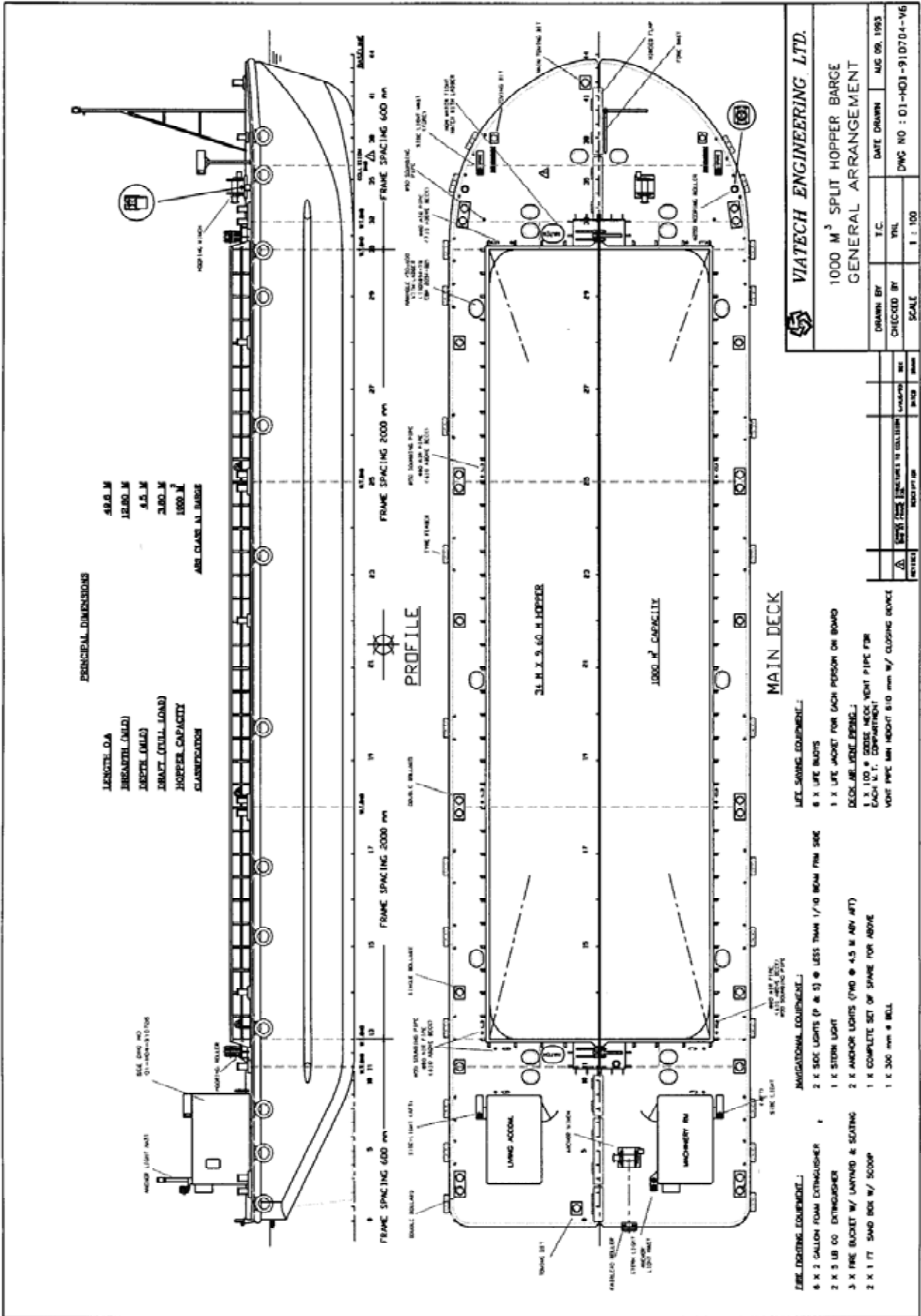
Hopper Barge Cheery SHB 1001

General Description

Year Built :	1 9 9 2
Dimension :	49.6 M (L) x 12.8 M (B) x 4.5 M (D)
Hopper Capacity :	1,000 cu. m.
Type :	non self-propelled
Dumping Arrangement :	self - split by hydraulic
License No. :	2 1 4 3 5 V
Class :	H. K. Marine Department
Power Source :	1 x 2135 diesel engine (40 KW)



General Layout of Hopper Barge SHB 1001



VIATECH ENGINEERING LTD.

1000 M³ SPLIT HOPPER BARGE
GENERAL ARRANGEMENT

DRAWN BY	T.C.	DATE DRAWN	AUG 09, 1993
CHECKED BY	PHL	DWG NO	01-H03-910704-V6
SCALE	1 : 100		